

# Wortley Fusion Healthcare Crypton Fabrics

Designed to make an impression, the options are endless with Fusion's extensive range of designs and coordinates!



RANGE View all 11 colours →  
**FUSION ANGLE**



RANGE View all 7 colours →  
**FUSION BLOSSOM**



RANGE View all 9 colours →  
**FUSION BROCADE**



RANGE View all 6 colours →  
**FUSION DAMASK**



RANGE View all 6 colours →  
**FUSION FACET** **NEW**



RANGE View all 3 colours →  
**FUSION FERN**



RANGE View all 8 colours →  
**FUSION GRID**



RANGE View all 32 colours →  
**FUSION HERRINGBONE**



RANGE View all 5 colours →  
**FUSION HEXAGON**



RANGE View all 4 colours →  
**FUSION HYDRANGEA**



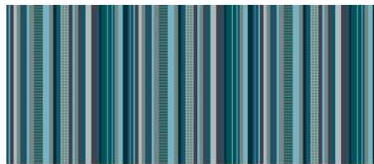
RANGE View all 9 colours →  
**FUSION JACKSON**



RANGE View all 12 colours →  
**FUSION LEAF**



RANGE View all 4 colours →  
**FUSION LILYPAD**



RANGE View all 6 colours →  
**FUSION METRO** NEW



RANGE View all 5 colours →  
**FUSION MODE** NEW



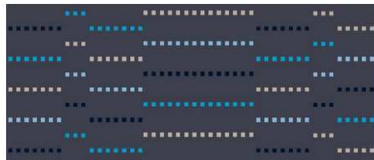
RANGE View all 5 colours →  
**FUSION MOROCCAN**



RANGE View all 9 colours →  
**FUSION OLIVE**



RANGE View all 7 colours →  
**FUSION ORBIT**



RANGE View all 8 colours →  
**FUSION PUNCHCARD**



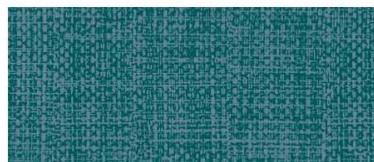
RANGE View all 5 colours →  
**FUSION ROSECLOUD** NEW



RANGE View all 6 colours →  
**FUSION SPRINGTIME** NEW



RANGE View all 5 colours →  
**FUSION TROPICS** NEW



RANGE View all 43 colours →  
**FUSION TWEED**



RANGE View all 7 colours →  
**FUSION WATERMARK**

<https://austexfabrics.com.au/product-category/printed-textiles/>

Using the latest technology in waterproof polyester base fabrics, Fusion guards against spills and stains, and is totally anti-microbial.

All designs have been tested to comply to AS1530.3 Flammability Standard.

Fusion printed fabrics are bleach cleanable and fire retardant, making them the perfect choice for hospital or aged care environments.

Please note: Fusion fabrics are custom printed by the metre

Composition: 90% Polyester 10% Polyurethane

Heavy Commercial – Health

**LABEL E CRYPTON & FUSION FABRICS** Regular vacuuming recommended to remove general soiling. **Everyday Spills** 1. Remove excess residue by blotting or gently lifting with a sponge. 2. Use a mild soap-and-water mixture (1 tsp. enzyme detergent, such as Radiant, with two cups of warm water). 3. Apply the solution to the stain, gently agitate with a soft bristle brush and wait a minute or so to allow the detergent to break down the stain. Crypton can all be cleaned with a 1:9 bleach/water mixture - do not use solvents **Wortley Group Pty Ltd** [www.wortleygroup.com.au](http://www.wortleygroup.com.au) 4. Gently blot the stain 5. Thoroughly rinse with water. Remember that both have a permanent moisture barrier, so rinse liberally as remaining soap/cleaner will attract dirt and hinder repellency qualities. **Tough Stains/Spot Stains** **Overall Cleaning** We recommend periodically cleaning using the hot water extraction method.