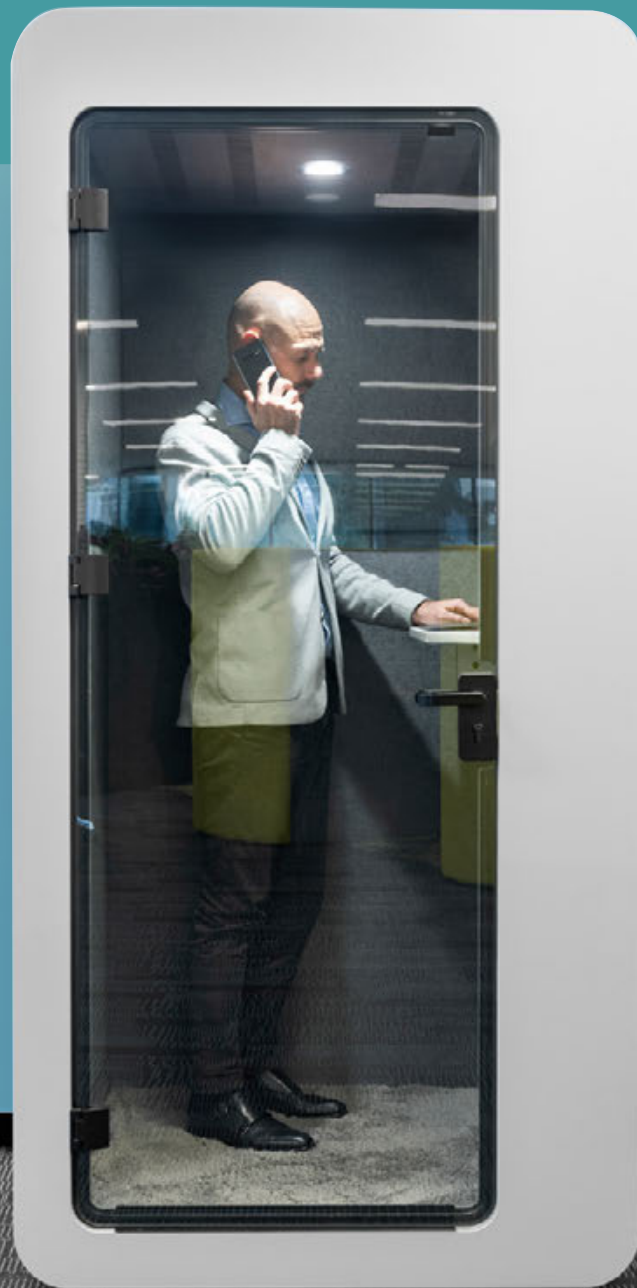




ZONE



Find your focus

Create Quiet.

Every dynamic workplace needs a haven for taking that call or clearing the mind.

Some people are extroverts, some are introverts. Some work is collaborative, some is confidential.

A workplace should be as diverse as its workforce and as varied as its work.

Qzone creates a space for everyone.





Boost productivity.

Compliment the vibrant collaboration of your open spaces with the laser-focus of Qzone

A space for everything.

Today's office environments draw on the concept of removing barriers. The premise is a logical one: people will collaborate, ideas will flow. This is good.

But even good ideas and great working relationships need time and space and quiet in order to grow.

So, is it possible to have a space of calm within a workspace of vibrancy? Our designers thought so. And the 20dB noise reduction agrees.

Find your focus.



Noise Reduction

Internal acoustic panelling walls absorb 20dB of noise as test in a simulated environment.



Built-in Technology

Motion sensor, light, extraction fan, GPO & USB power outlet.



Workstation

Comes with table top to take notes or work on your laptop.



Tailor to Your Space

Many colours to choose from and even print your artwork or logo on outer panels and door.



Kit It Out

Add a wireless fast-charge to the worktop, bookshelf, stool, extra window or a bag hook.



GECA Certified

Ticks the eco-friendly box being verified by Good Environmental Choice Australia.

(Undergoing final documentation.)



Peace of Mind

The 8mm frameless glass door is made from the best quality double laminated safety glass, and the walls are prefabricated from a combination of 18mm wall panel, sound-absorbing foam and acoustic rated recycled PET panel. The quality of the silence is unmistakable.

Concentration mode.



According to research by IPSOS, employees who work in an open-plan office lose 86 minutes a day due to distractions.

In fact, 95% of employees would rather work in enclosed private spaces.

Qzone provides that space, while still maintaining a sense of togetherness. The toughened glass door helps to keep you part of the team—giving you the freedom to switch on focus whenever its needed.



The introvert.

Can feel anxious and drained by the inescapable presence of other people.

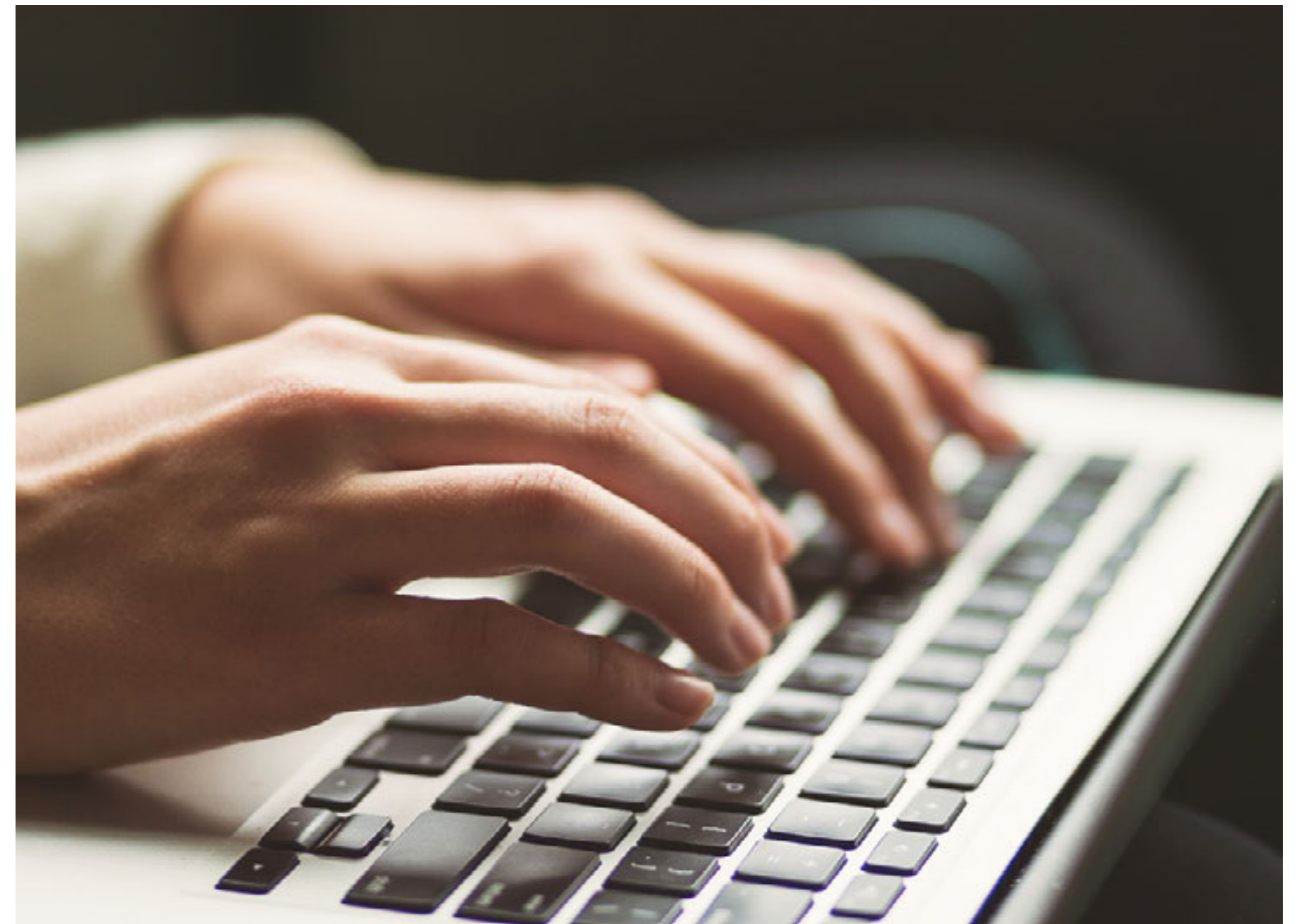
A space for everyone.

50% of the population are more introverted than extroverted. And about half of those are very introverted.

We take down walls, dispense with cubicles and place leaders in amongst the people—all to increase social interaction. This, of course, is great news for extroverts, but it's a major drain on the morale of our introverted team members.

As Susan Cain, author of *Quiet: The Power of Introverts in a World That Can't Stop Talking*, says, "We feel at our most alive and switched on when things are a bit calmer."

In the zone.



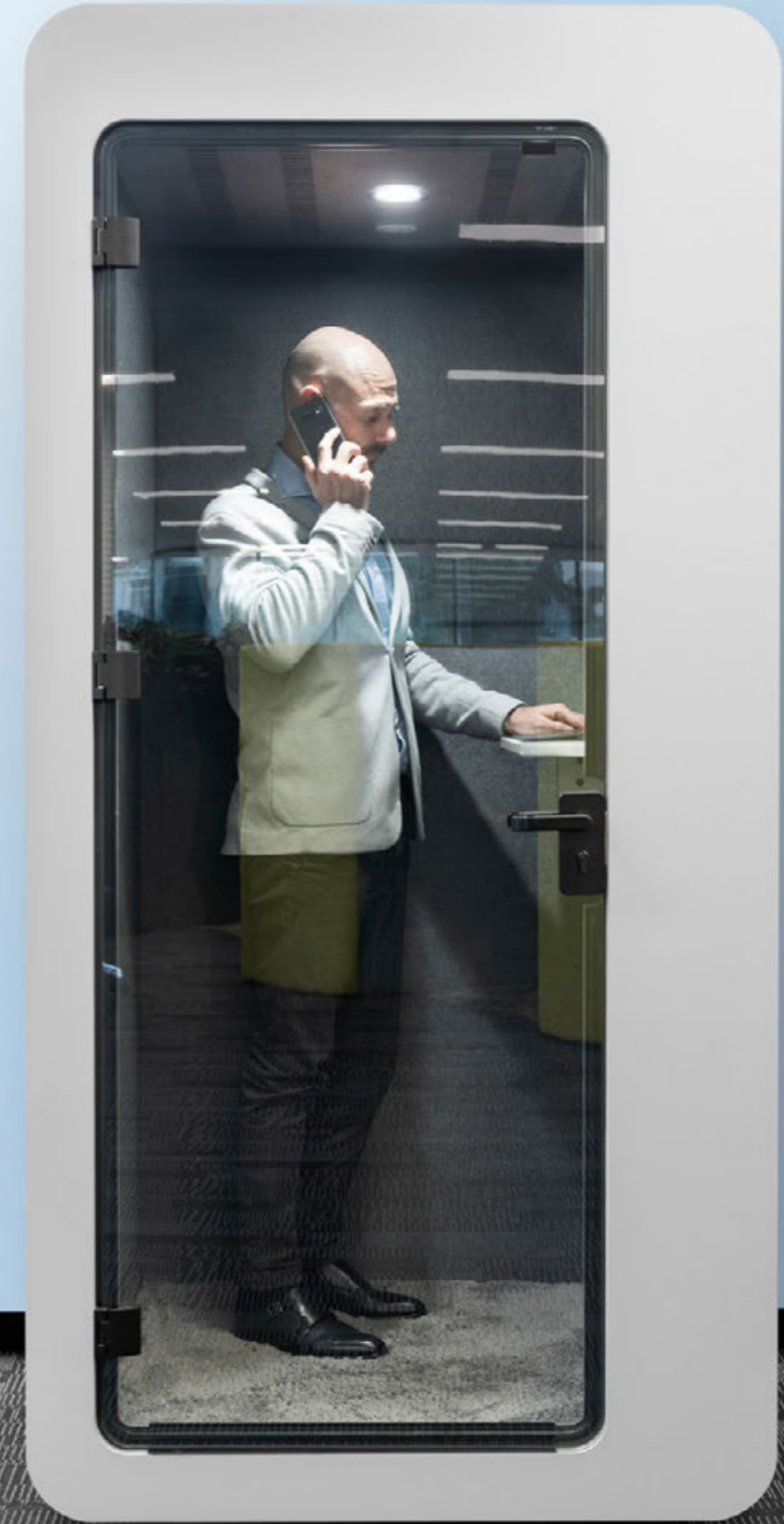
As you open the door of the Qzone, leaving behind the thrum of activity in the office, the motion sensor light clicks on to welcome you in to a block of focused productivity.

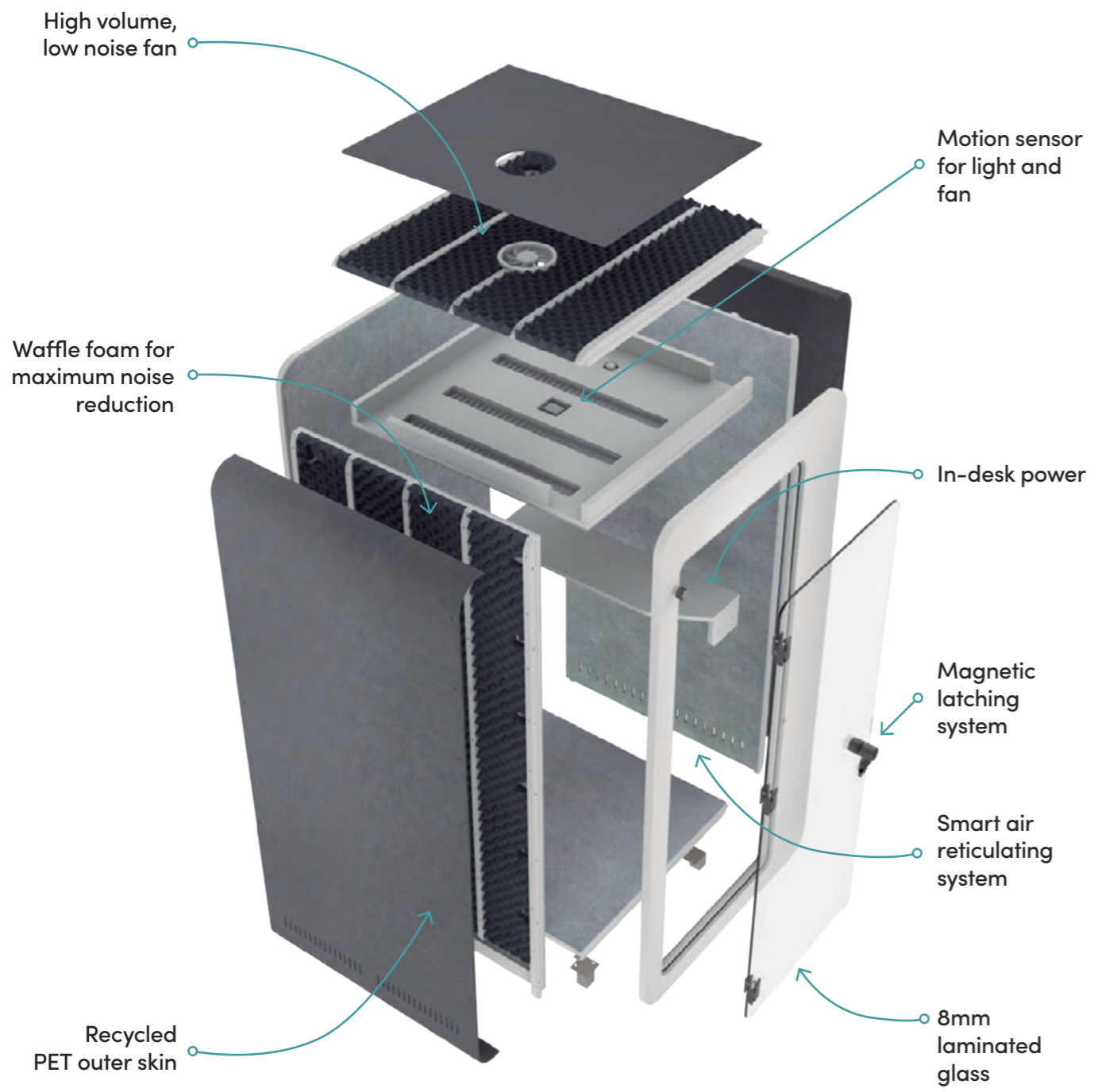
With three quarters of the outside noise gone, you put your laptop on charge and place it on the worktop next to your phone—it too is charging via a USB outlet, so it doesn't die while you take a video call.

Thanks to the acoustic panelling, your voice sounds great at the other end of the call and a quiet extraction fan keeps your air fresh while you work.

Pro-social spaces

“Hey! Quiet over there! I need to take a call.” No one wants to be that guy. The Qzone promotes productive social interaction by creating private zones in our social spaces.





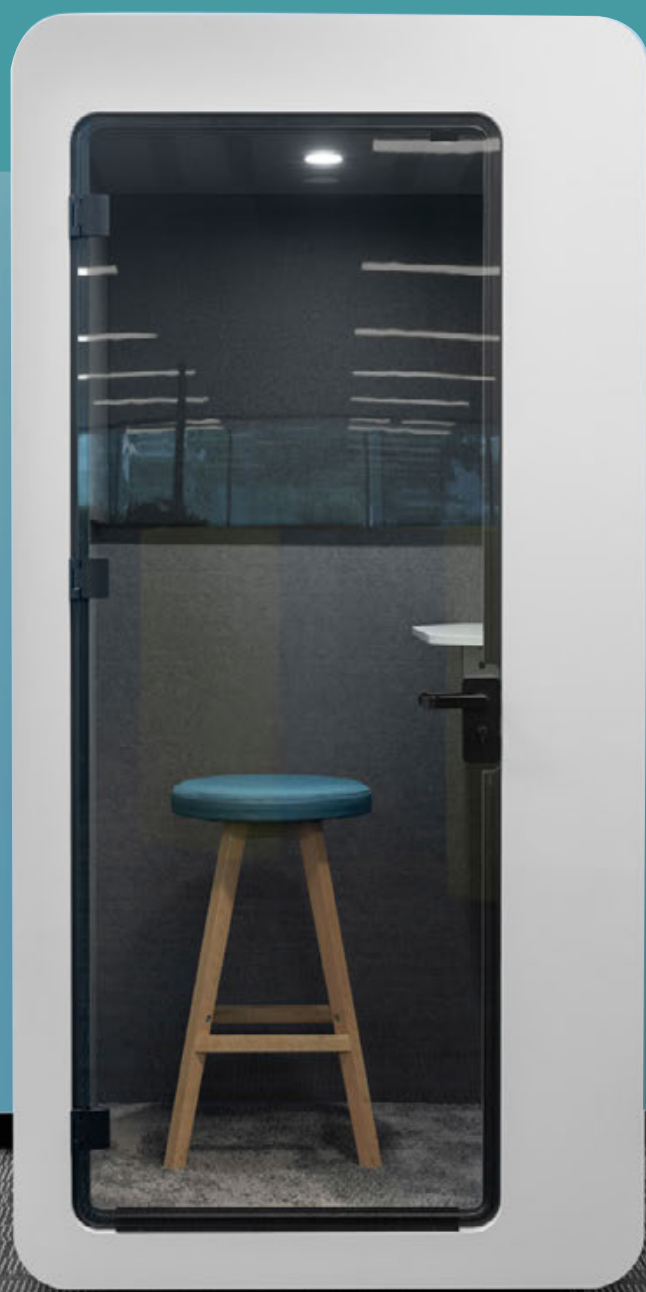
Find your focus



Make Qzone your own

Yes, you can customise it! Add your branding to the exterior or make it blend in to your surrounds. Frost the glass door for more privacy. Add a wireless fast charger so your people can camp out without losing battery.





OLG